

# For 73210-9993 Harley Davidson Motorcycles made before 6/10/02

Age Range: 3-7 Yrs.  
 Weight Limit: 65 Lbs.  
 Surfaces: Grass & Hard  
 Speed: 2.5 / 5.0 MPH Forward  
 2.5 MPH Reverse  
 Colors: Blue Body  
 Flame Trim  
 Intro: 02-05-01 U.S.  
 Suggested Retail: \$199.99  
 Box Dimensions: 40" x 20" x 25"  
 35 Lbs.  
 Warranty: One Year Vehicle  
 6 Months Battery

## 73210-9993

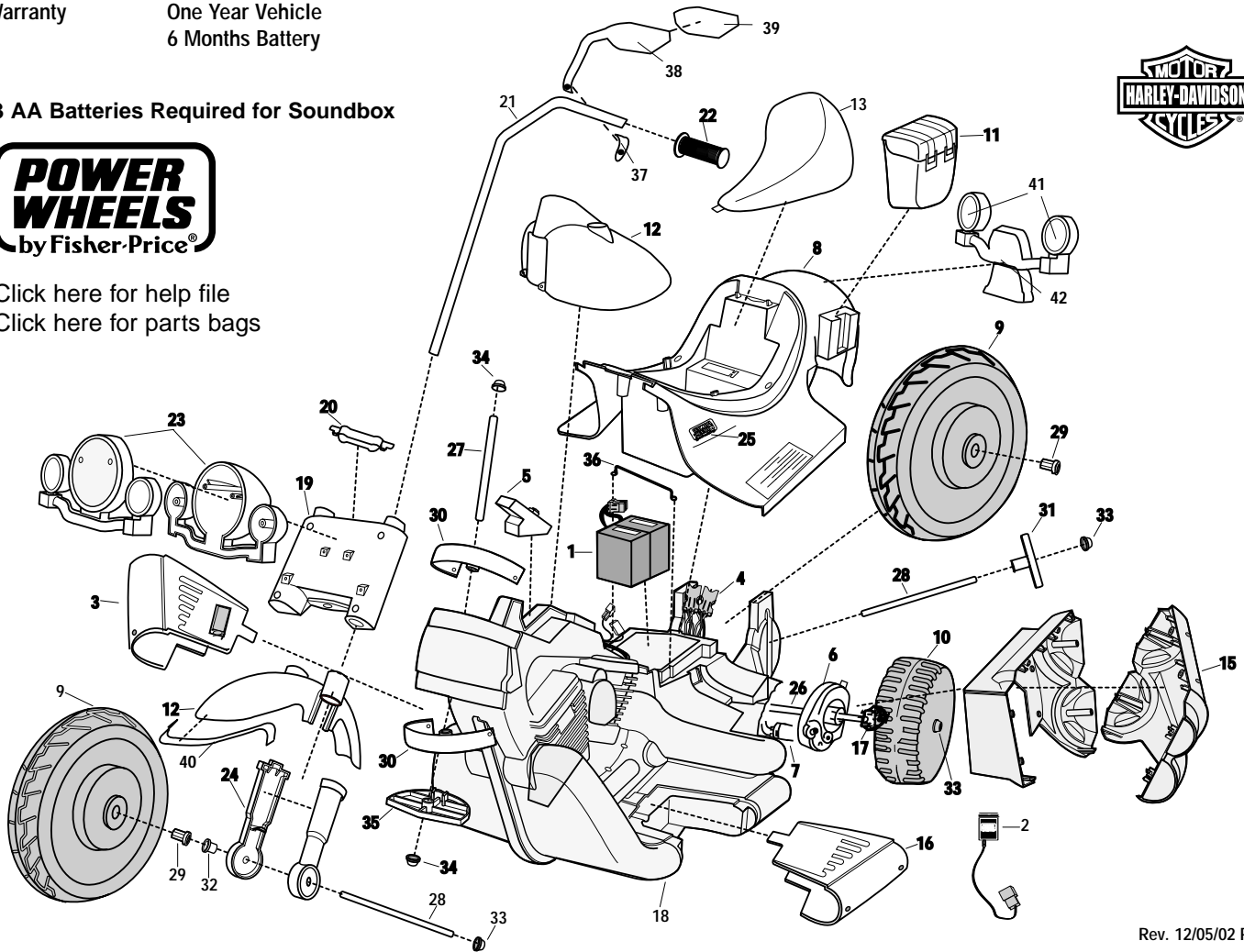
### Harley Davidson® Motorcycle Advanced Series Non H.E. 12 Volt



3 AA Batteries Required for Soundbox



[Click here for help file](#)  
[Click here for parts bags](#)



Rev. 12/05/02 Pav

Item No.	Description	Part No.	Qty.	Item No.	Description	Part No.	Qty.	Item No.	Description	Part No.	Qty.
<b>Working / Electrical Parts</b>											
1	6 Volt Battery	00801-0712	2	17	Driver	73233-2239	2	36	Battery Retainer	74290-4419	1
2	12V Charger	00801-0973	1	18	Frame set (incl. L & R sides)	74370-9219	1	37	Mirror Clamp	75209-2429	2
3	Right Footboard Assembly w/switch	74370-9239	1	19	Front Fork	75201-2349	1	38	Mirror Housing Left	75209-2449	1
<b>4</b>	<b>Wiring Harness Assembly</b>	<b>74290-9799</b>	1	20	Fork Cover/clamp	74370-2389	1	39	Mirror Lens	75209-2469	2
5	Soundbox	74290-9559	1	21	Handlebar Set (banded)	74290-9029	1	40	Fender tip	75210-2419	1
<b>6</b>	<b>#7 Motor Gearbox Assm.</b>	<b>74290-9509</b>	2	22	Handgrip	74290-2399	2	41	Tail light cover	75210-2479	2
7	Motor w/Pinion	74290-9539	2	23	Headlight Assembly	74370-9289	1	42	Tail light assm	75210-2299	1
<b>Plastic / Other Parts</b>											
8	Body (N/A)	74370-2109	1	24	Shock Set (banded)	74370-9329	1	<b>Parts Not Shown</b>			
9	Large Wheel	74290-2159	2	25	PW Emblem	74460-9069	2	Mirror Housing Right	75209-2459	1	
10	Drive Wheel (Small)	74290-2269	2	<b>Hardware / Metal Parts</b>							
11	Saddle Bag	74290-2129	2	26	Axle (drive wheel)	74290-4509	1	Decal Sheet	73210-0310	1	
12	Front Fender and Gas Tank	73210-213A	1	27	Axle (fork)	74290-4529	1	Owner's Manual	73210-0920	1	
13	Seat	74290-2309	1	28	Axle (front/rear wheel)	74290-4519	2	Small Parts Bag(purchased parts)	73210-9139	1	
15	Exhaust Set inner and out (banded)	74370-9169	1	29	Bushing (hex)	73233-2559	4	Hardware Bag	73210-9279	N/A	
16	Footboard / Left	74370-2249	1	30	Bushing (steering)	74370-2359	2	Hardware Bag (sub)	73210-9289	1	
<b>Parts Not Shown</b>											
Large Parts Bag(molded parts)											
<b>Gearbox W/Out Motor</b>											
Control Switch											
3/4" Plastite Screw											
Adhesive clip											
Screw 8 x 1/2											

Items in bold & underlined print are only to be ordered by a service center.

N/A = Not Available