

Age Range: 3-7 Yrs.
 Weight Limit: 65 Lbs.
 Surfaces: Grass & Hard
 Speed: 2.5 / 5.0 MPH Forward
 2.5 MPH Reverse
 Colors: 75200 Black Body
 75201 Blue Body
 75202 Purple Body
 75203 White Body
 All have Flame Trim
 Intro: 8-11-00 U.S.
 Suggested Retail: \$199.99
 Box Dimensions: 40" x 20" x 25"
 35 Lbs.
 Warranty: One Year Vehicle
 6 Months Battery

75200/01/02/03-9993

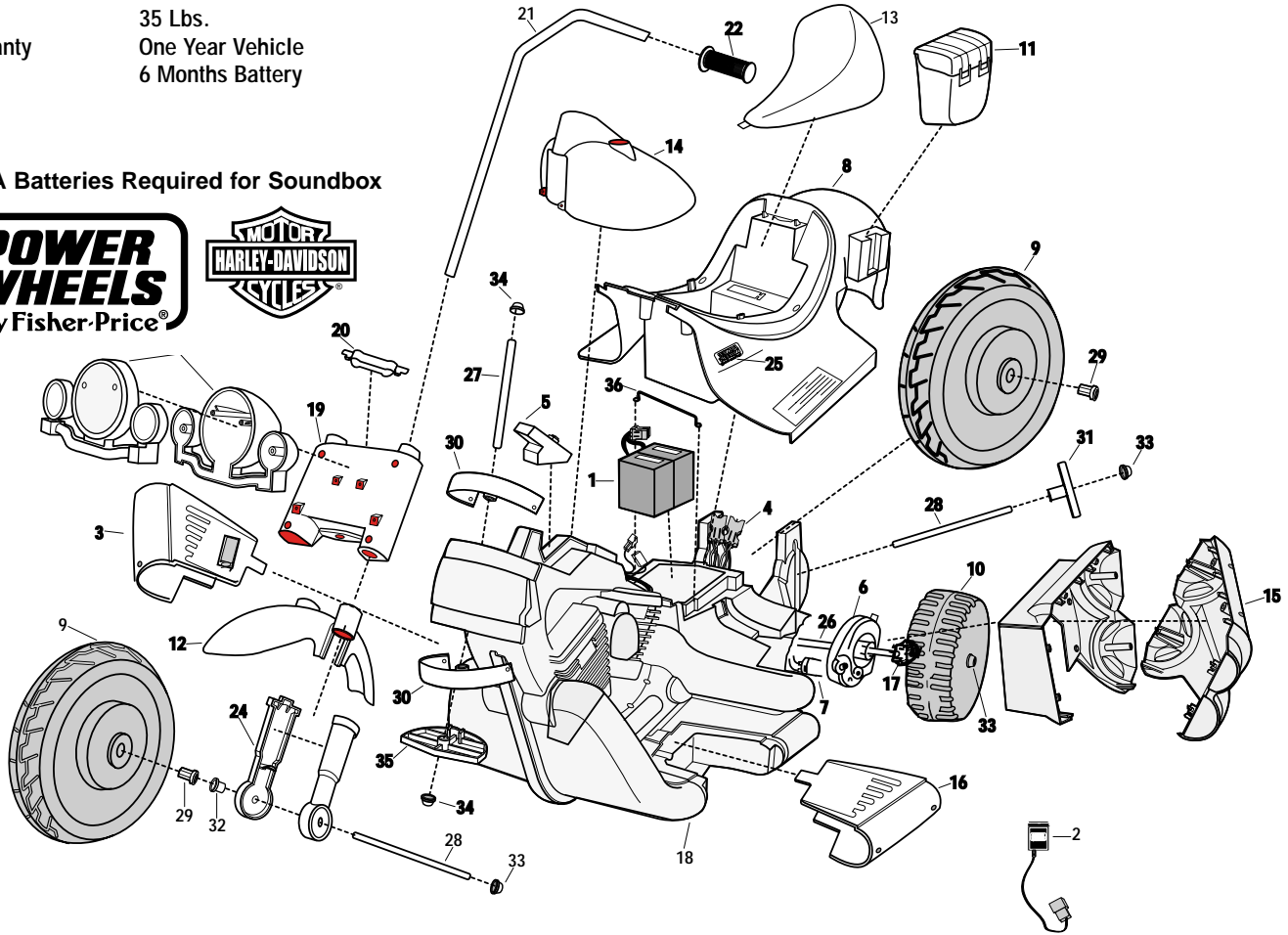
My Design

Harley Davidson® Motorcycle

Advanced Series

Non H.E. 12 Volt

3 AA Batteries Required for Soundbox



Item No.	Description	Part No.	Qty.	Item No.	Description	Part No.	Qty.	Item No.	Description	Part No.	Qty.
Working / Electrical Parts				14	Gas Tank Black	75200-214A	1	29	Bushing (hex)	73233-2559	4
1	6 Volt Battery	00801-0712	2		Gas Tank Blue	75201-214A	1	30	Bushing (steering)	74370-2359	2
2	12V Charger	00801-0973	1		Gas Tank Purple	75202-214A	1	31	Bushing (axle/silver)	74370-2379	2
3	Footboard Assembly w/switch	75200-9239	1		Gas Tank White	75203-214A	1	32	Bushing (round/black)	74550-2689	2
4	Wiring Harness Assmly	74290-9799	1	15	Exhaust Set (banded)	74370-9169	1	33	.437 Cap Nut	0801-0226	6
5	Soundbox	74290-9559	1	16	Footboard / Left	74370-2249	1	34	.345 Cap Nut	0801-0215	3
6	#7 Motor Gearbox Assm.	74290-9509	2	17	Driver	73233-2239	2	35	Steering Stop	74370-2369	1
7	Motor w/Pinion	74290-9539	2	18	Frame (incl. L & R sides)	75200-9219	1	36	Battery Retainer	74290-4419	1
Plastic / Other Parts				19	Fork Black (upper)	75200-2349	1	Parts Not Shown			
8	Body Black (N/A)	75200-2109	1		Fork Blue (upper)	75201-2349	1	Decal Sheet	75200-0310	1	
	Body Blue (N/A)	75201-2109	1		Fork Purple (upper)	75202-2349	1	Literature Bag	75200-9019	1	
	Body Purple (N/A)	75202-2109	1	20	Fork White (upper)	75203-2349	1	Owner's Manual	75200-0920	1	
	Body White (N/A)	75203-2109	1	21	Fork Cover	74370-2389	1	Small Parts Bag	75200-9159	1	
9	Large Wheel	74290-2159	2	22	Handlebar Set (banded)	74370-9029	1	Hardware Bag	75200-9279	1	
10	Drive Wheel (Small)	74290-2269	2	23	Handgrip	74370-2399	2	Large Parts Bag Black	75200-9249	1	
11	Saddle Bag	74370-2129	2	24	Headlight Assembly	74370-9289	1	Large Parts Bag Blue	75201-9249	1	
12	Front Fender Black	75200-213A	1	25	Shock Set (banded)	74370-9329	1	Large Parts Bag Purple	75202-9249	1	
	Front Fender Blue	75201-213A	1	Hardware / Metal Parts				Large Parts Bag White	75203-9249	1	
	Front Fender Purple	75202-213A	1	26	Axle (drive wheel)	74290-4509	1	Gearbox W/Out Motor	74290-9519	1	
	Front Fender White	75203-213A	1	27	Axle (fork)	74290-4529	1	Control Switch	00801-0933	1	
13	Seat	74290-2309	1	28	Axle (wheel)	74290-4519	2	3/4" Plastite Screw	0912-8001	55	

Items in **bold & underlined** print are only to be ordered by a service center.

N/A = Not Available

Rev. 10-17-01 Pav